

Drum & Tote Mixer Accessories

Helping you work Safer... Easier... Faster...



1) Filter-Regulator-Lubricators • for Mixer air drive longevity

For mixer drive Warranty Compliance and reduces motor maintenance, extends motor life by removing air contaminants, regulating pressure, and emitting an oil lubricating fog. Weight: 8.0 lbs.

Product Codes:	Mixer Air Drive Size	Connection
DM-55FRL	for DM-45, 55, 200 & DM- 400 Series mixer drives, 3/4 - 2 Hp	¼" NPT
DM-600FRL	for DM-600 Series IBC mixer drives, 3 - 5 Hp	½" NPT

2) DM-55MHB Mixer Hoist Bracket • Safer and easier mixer mounting and dismantling

Quick mount, high strength bracket for all "DM-45" and "DM-55" Series Rim & Bung mount air drives. Fasteners Included, 150 lb. Capacity, Weight: 0.6 lbs.

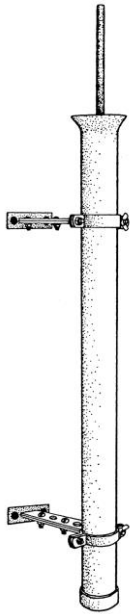
Product Code: DM-55MHB



3) DM-55MRT Safety SolventSaver™ • Easily clean drum bung entry mixers & pumps

Clean any 55 gallon bung entry mixer safely, thoroughly & quickly. Minimize exposure to HAZMATs. Prevents cross-contamination & reduce spillage. Quick release tube bracket for rapid solvent change. Capacity: 1.5 quarts. Size: 1.85"ID x 35" H, plated steel wall brackets, aluminum tube, Weight: 4 lbs.

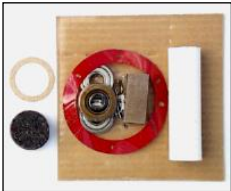
Product Code: DM-55MRT



4) Mixer Service Kits • Rapid in-house maintenance of air motors

Kits includes all bearings, vanes, springs, gaskets, muffler filter and components. Weight: 0.3 lb.

Product Codes:	Description	Drive Size
DM-45ADA/SK	Service kit of internal components for renewing ¾ Hp Series motors	0.75 Hp
DM-55ADA/SK	Service kit of internal components for renewing 1½ Hp Series motors	1.5 Hp
DM-600ADA/SK	Service kit of internal components for renewing 4 Hp Series motors	4.0 Hp
DM-55MMA/FF	Replacement felt filter element for 1½ Hp Series motor mufflers	1.5 Hp
DM-600MMA/FF	Replacement felt filter element for 4 Hp Series motor mufflers	4.0 Hp



5) DM-166GWK Ground Wire Kit • For safe, explosion proof mix & pump operations

Explosion proof grounding wire kit for volatile environment per Federal Regulation NFPA 77.

Set of 4 cables: 1 x 1 ft. wire, 2 x 6 ft. wire and 1 x 10 ft. wire. Weight: 1 lb.

Product Code: DM-166GWK



6) Mixer Shaft Couplers • Connect most shaft sizes

Product Codes:	Specifications	Material	Wt.
DM-45MSC	3/8" x 1/2" coupler for "DM-05" Series pail mixers	stainless steel	0.3 lb.
DM-55MSC	1/2" x 1/2" coupler for "DM-55" Series drum mixers	stainless steel	0.3 "
DM-500MSC	1/2" x 5/8" coupler for "DM-600" Series IBC mixers	plated steel	0.6 "
DM-600MSC	5/8" x 5/8" coupler for "DM-600" Series IBC mixers	plated steel	0.6 "



7) DM-55ODL Drum LidConverter™ • For safer, faster open drum mixing

Mixer platform for bung entry "no-splash" mixing in open head drums with DM-45 or 55 BAS mixer drives. Side and center 2" NPT bunghole, 1 x ¾" NPT bunghole with bung caps & hoop clamp. Weight: 14 lbs.

Product Code: DM-55ODL



8) DM-55SCC Series Safety SplashCaps™ • Provides safer, low fume venting bung entry mixing

Reusable plastic or steel cap prevents hazardous liquid splash-back and fume exposure while bung entry mixing with hand-held or bung mount mixer drives or during mixer cleaning with DM-55MRT rinse tube.

Product Codes:	Application	Material	Wt.
DM-55SCC/MRT	For rinse tube cleaning with DM-55MRT	plated steel	0.2 lb.
DM-55SCC/SD2	For steel drum mixing with DM-55ADH/A	polyethylene	0.1
DM-55SCC/PD	For plastic drum mixing with DM-55ADH/A	polyethylene	0.1 "
DM-55SCC/BAS	For bung mount mixing with DM-55BAS	polyethylene	0.1 "



9) Bung Accessories • for adapting bung holes in drums, totes and other containers

Product Code	Specifications	Wt.
DM-55BTG	ThreadGuard™ protects plastic bung threads and bung equipment, 2" NPT	0.6 lb.
DM-55BCF/M	Mauser ThreadConverter™ converts male coarse threads to F-2" NPT, HDPE	0.2 lb.
DM-55BCF/B	Buttress ThreadConverter™ converts male coarse threads to F-2" NPT, HDPE	0.2 lb.
DM-55BCF/B6	Buttress ThreadConverter™ converts male coarse threads to F-2" NPT, 316ss	1.1 lb.



10) DM-55EEA Muffler Extension Assembly • Prevents exhaust aerosols around drum bung

Flexible exhaust extension, locates muffler up to 20 inches away from bung hole.

Product Codes:	DM-55EEA	PVC airline with brass hose connections	¼" NPT	Wt. 0.3 lb.
	DM-600EEA	PVC airline with brass hose connections	½" NPT	Wt. 0.8 lb.

